

Double loop coupling

685589-XX



Double loop coupling with steel hubs

- Maximum rotational speed 3000 rpm
- Electrical insulation between shafts
- Suitable for applications with low accuracy requirements

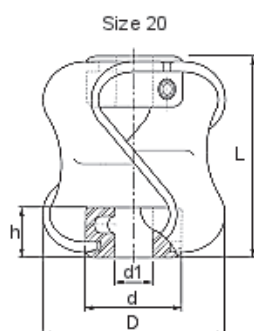


Technical data

Max rotational speed (rpm)	3000
Material and finishes; Hubs	Steel 230M07 Pb, zinc plated with clear passivate
Material and finishes; Double loop element	HYRTEL®
Temperature range (°C)	-40 .. +100

Dimensions

Coupling size	Max dia. D, mm	Ø d1 mm	Length L, mm	Hub height h, mm	Fastener size	Fastener torque, Nm	Fastener wrench, mm	Mass ka x 10 ⁻³
20	48	6 or 10	48	12.70	M4	2.27	2	92



Performance

Coupling size	Max torque Nm	Maximum misalignment /displacement		Axial, mm
		Angular, deg	Radial, mm	
20	3	15	3.2	7.5

Ordering information

685589-02	Shaft coupling, Double loop type, Ø 6 mm - Ø 6 mm
685589-03	Shaft coupling, Double loop type, Ø 10 mm - Ø 10 mm

Table notes

Maximum torque at maximum displacement.
Maximum torque at displacement 1° angular, 2 mm axial, 0.5 mm radial.