

Oldham coupling

750858-XX



Oldham coupling with set screw hubs

- Simple to mount and commission
- Electrical insulation between shafts
- Suitable for normal industrial applications

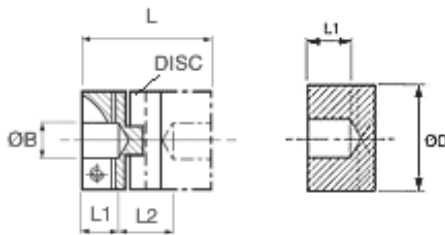


Technical data

Material and finishes	Brass BS 2874 CZ121. Alocrom, chromate and passivate finish
Fasteners	Alloy steel, black oiled
Torque discs	Types 236 - Acetal (black)
Temperature range (°C)	-20 .. +60

Dimensions

Coupling size	Ø D mm	L mm	L1 mm	L2 mm	Ø B mm	Fastener screw	Fastener torque Nm	Fastener wrench mm	Moment of inertia $\text{kgm}^{-2} \times 10^{-8}$	Mass $\text{kg} \times 10^{-3}$	Corresponding Acetal (black) Disc ref
25	25.4	28.4	8.6	11.2	6 or 10	M3	2.43	2.5	252	31	236.25



Performance (at 20°C with standard acetal disc)

Coupling size	Peak torque Nm	Max compensation at 3000 rpm Angular deg	Radial mm	Axial mm	Torsional stiffness Nm/rad	Static break torque Nm
25	4	0.5	0.2	0.1	205	13

Ordering information

750858-01	Shaft coupling, Sliding disc type Ø 6 mm - Ø 6 mm set screw
750858-02	Shaft coupling, Sliding disc type Ø 10 mm - Ø 10 mm set screw

Table notes

Peak torque; Select a size where peak torque exceeds the application torque x service factor.

Couplers can provide up to (Ø D x 0.1) radial compensation in extreme cases.

Observe given values for maximum backlash-free life.

Axial compensation is set on installation.

Electrical isolation between shafts >3kV.

Values apply at 50% peak torque with no misalignment, measured shaft-to-shaft with largest standard bores.