

RS-A 570

ABSOLUTE SINGLETURN ENCODER



- 10-bit
- Binary or Gray-code possible with Excess-code
- Parallel output
- 9...30 Vdc / 5 Vdc

ELECTRICAL SPECIFICATION

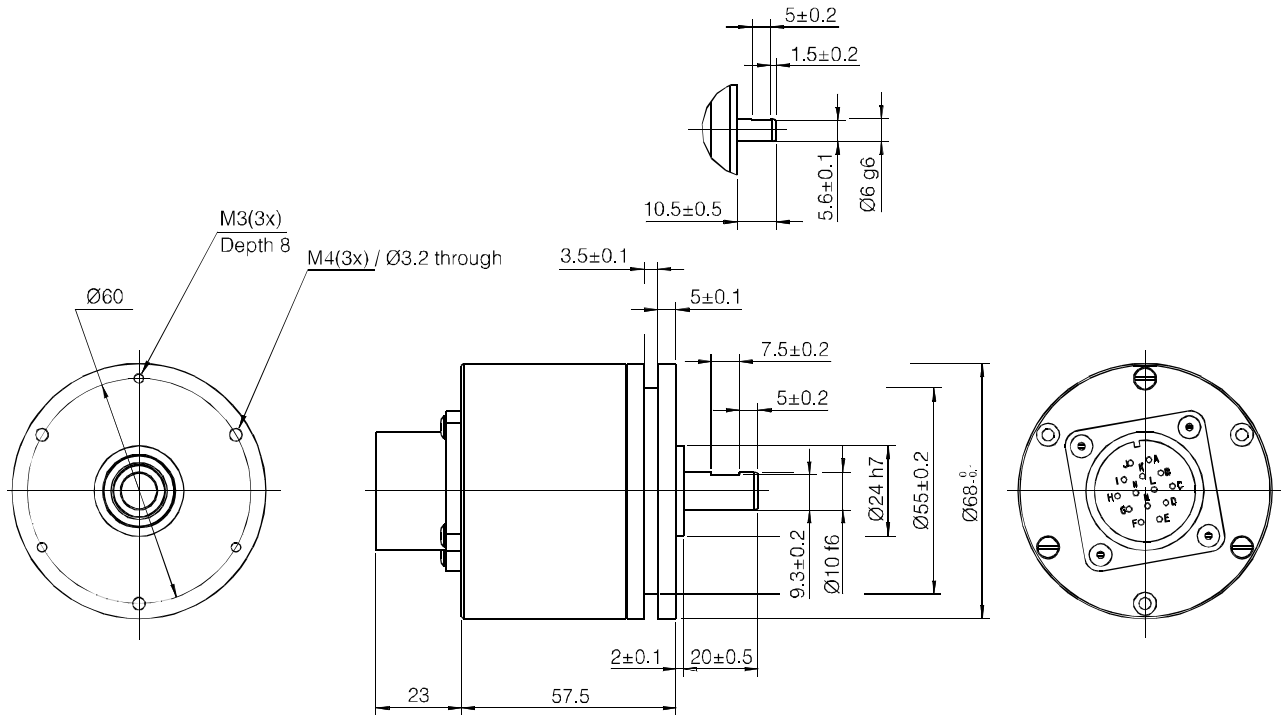
Supply voltage	9...30 Vdc, polarity protected (5 Vdc \pm 5%)
Current consumption:	
Gray sink	Typ 25 (Max 70) mA at 24 Vdc, Typ 50 (Max 90) mA at 5 Vdc
Gray source	Typ 50 (Max 100) mA at 24 Vdc
Binary / Gray (sink/source)	Typ 75 (Max 120) mA at 24 Vdc, Typ 110 (Max 200) at 5 Vdc
Output signals:	
Gray	Bit 1-10
Binary	Bit 1-10
Data code	Binary, Gray, Excess
Outputs	$U_{High} > E-3 V$, $U_{Low} < 0.4 V$ (at 10 mA) short-circuit protected
Inputs:	
Transition 9...30 Vdc	
/ HOLD	High $>0.6 x +E V$, Low $<0.25 x +E V$, NC = High
CCW	High $>0.6 x +E V$, Low $<0.25 x +E V$, NC = Low
Transition 5 Vdc	
/ HOLD	High $>2 V$, Low $<0.8 V$ (TTL Levels)
CCW	High $>2 V$, Low $<0.8 V$ (TTL Levels)
Delay	
/HOLD	$< 10\mu s$
CCW	$< 150\mu s$
Load max.	50 mA sink, 50 mA source, 20 mA sink/source
Frequency range	0...50 kHz
Accuracy	$\pm 1/2$ LSB
Connector (male)	MS3102E-20-27P
Accessories	MS3106E-20-27S Art.no 00201013, straight MS3108E-20-27S Art.no 00201017, angled

CONNECTION

Pin MS	Gray, sink or source function	Sink/source function (Binary/Gray)
A	Bit 1	Bit 1
B	Bit 2	Bit 2
C	Bit 3	Bit 3
D	Bit 4	Bit 4
G	Bit 5	Bit 5
H	Bit 6	Bit 6
F	0 V	0 V
E	+E Vdc	+E Vdc
I	Bit 7	Bit 7
J	Bit 8	Bit 8
K	Bit 9 (/8)	Bit 9
L	Bit 10 (/9)	Bit 10
M	(/Bit 10)	/HOLD
N		CCW

RS-A 570

ABSOLUTE SINGLETURN ENCODER



MECHANICAL SPECIFICATION

Shaft speed max.	Mechanical 6 000 rpm Electrical [Max. frequency x 60/resolution] rpm
Moment of inertia	$2.6 \times 10^{-6} \text{ kgm}^2$
Shaft load max.	Radial 60 N, axial 50 N
Shaft, stainless steel	Ø 6 mm, 10 mm
Code disc	Unbreakable acrylic glass
Housing	Aluminium, anodized
Weight	Approx. 500 g
Protection class	IP 65 according to IEC 529
Operating temperature	-25°C...+70°C
Storage temperature	-25°C...+70°C
Vibration	$\leq 100 \text{ m/s}^2$ (50...2000 Hz)
Shock	$\leq 1000 \text{ m/s}^2$ (11 ms)

